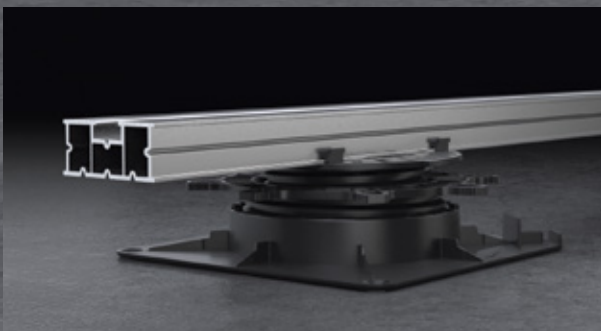
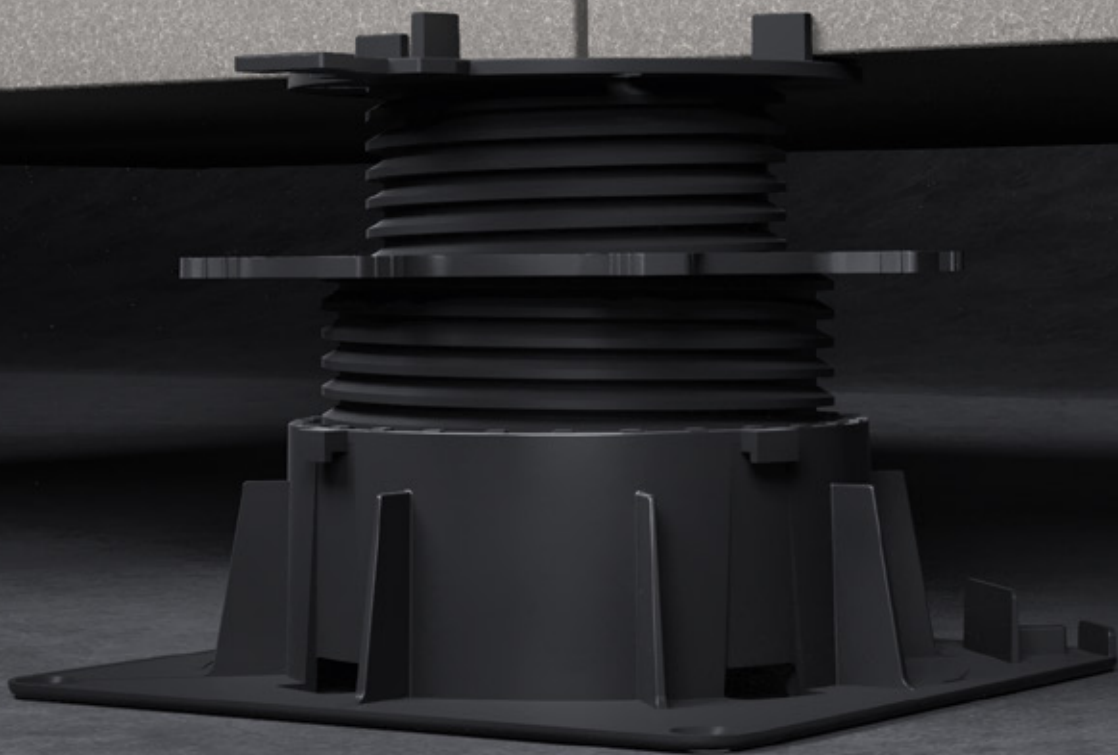


TERRA[®]
LEVEL

Always on the level...

Slab supports
for all heights
and applications



www.terra-level.com

Table of Contents

Aluminium profile system for patio slabs

Page 3

TLAP25 Blank, TLAP25 Anodised	Page 3
TLAP48 Blank, TLAP48 Anodised	Page 3
TLQV Terra Level lateral connector	Page 4
TLLV Terra Level longitudinal connector	Page 4
TLW Terra Level vertical connector	Page 4
TLPS15 Terra Level profile screw 15 mm	Page 5
TLPA3 Terra Level profile support 3 mm height, 3 mm joint	Page 5
TLPAP1 Terra Level profile support plate 1 mm height	Page 5
TL2K Terra Level MS adhesive black	Page 6
TL2KMS Terra Level 2K mixing tip	Page 6
TL2KKP Terra Level 2K Cartridge press	Page 6
TLAW Terra Level finishing bracket 15 x 15 mm leg	Page 6
TL1 Slab support 10 mm	Page 7
TL17 Alu-Klip self-leveling elevated support 30 - 60 mm	Page 7
TL18 Alu-Klip self-leveling elevated support 60 - 150 mm	Page 7
TL8-K Coupler 90 mm	Page 8
TL DRV Drainage grate, galvanised including tray	Seite 8
TL DRE Drainage grate, stainless steel including tray	Seite 8

Elevated support for wood and WPC substructures

Page 9

TL11 L-receptacle elevated support rigid 30 - 60 mm	Page 9
TL12 L-receptacle elevated support rigid 60 - 150 mm	Page 9
TL15 L-receptacle self-leveling support 30 - 60 mm	Page 9
TL16 L-receptacle self-leveling support 60 - 150 mm	Page 9
TL8-K Coupler 90 mm	Page 10

Slab support for patio slabs

Page 11

TL1 Slab support 10 mm	Page 11
TL2 block 30 mm	Page 11
TL3 1 mm shim	Page 12
TLGP Terra Level rubber granulate pad	Page 12
DVP bearing load distribution plate	Page 12

Elevated support for patio slabs

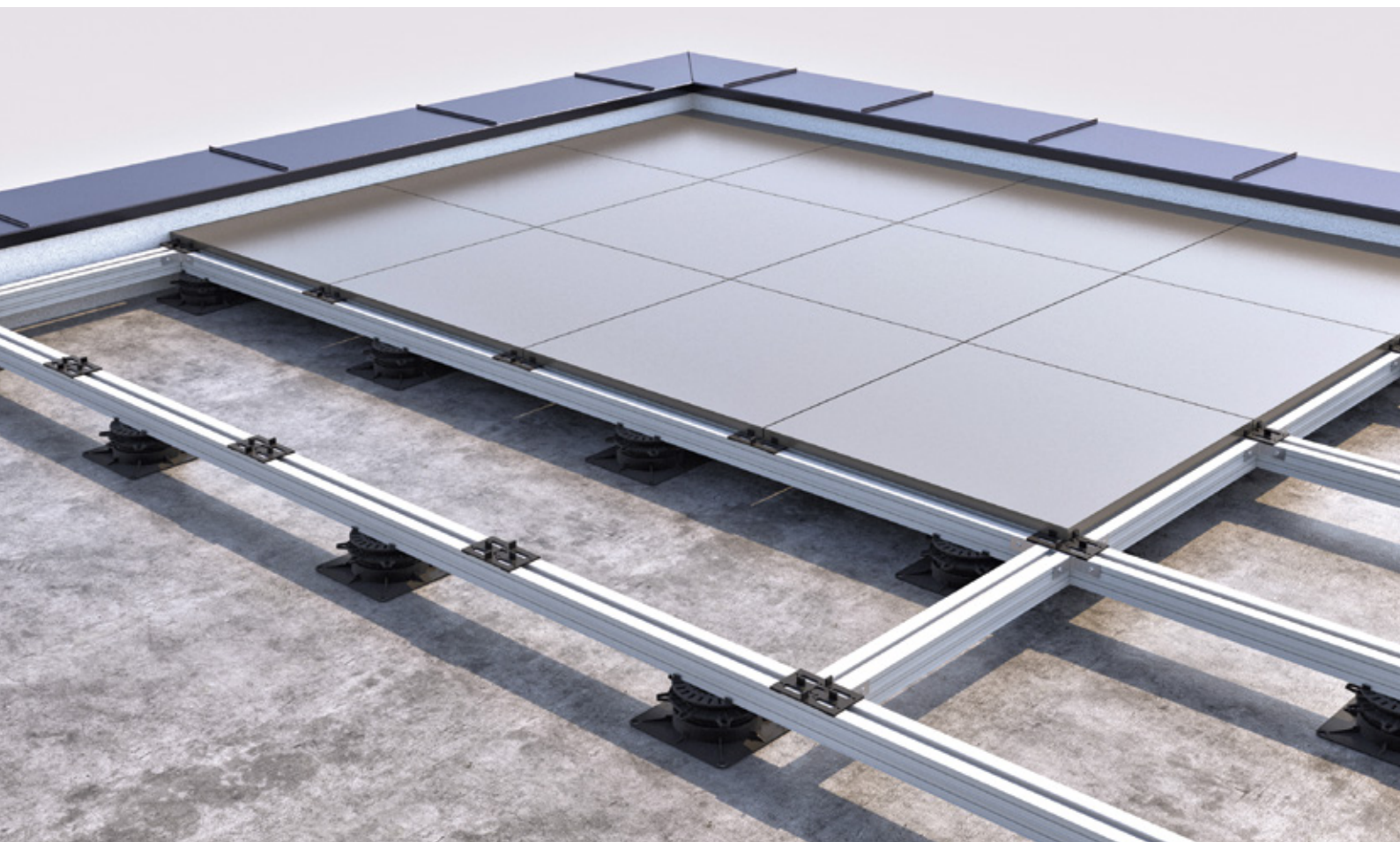
Page 13

TL7 elevated support 30 - 60 mm	Page 13
TL8 elevated support 60 - 150 mm	Page 13
TL8-K Coupler 90 mm	Page 13
TL4 elevated support 60 - 130 mm	Page 14
TL4-K Coupler 70 mm	Page 14

Joint crosses

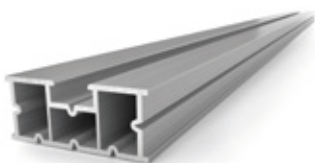
Page 15

FK3/FK5 joint cross 3 mm/5 mm	Page 15
SFK special joint cross 3 mm	Page 15
FKT3/FKT5 joint cross with plate 3 mm/5 mm	Page 15
DVP crushed stone support joint 3 mm	Page 15



Aluminium profile system for patio slabs

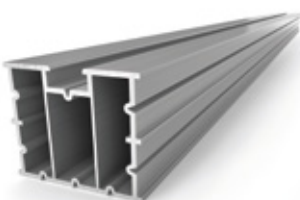
- Suitable for natural stone
- Impact sound insulating support
- No drainage loss
- Screw channels with special screws
- No clamps for edge slabs and faceplates



TLAP25 Blank, TLAP25 Anodised

Terra Level Alu Profile 25 is designed to ensure easy installation with high load capacity. Screw channels and precision-fit guides for all connectors allow maximum screwing comfort.

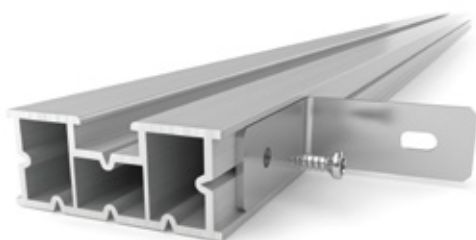
Item no.	Height	Length	Pcs. / pallet
TLAP25B	25 mm	2400 mm	72
TLAP25E	25 mm	2400 mm	72



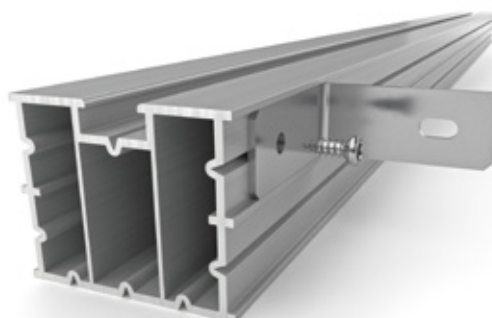
TLAP48 Blank, TLAP48 Anodised

Terra Level Alu Profile 48 is designed to ensure easy installation with high load capacity. Screw channels and precision-fit guides for all connectors allow maximum screwing comfort.

Item no.	Height	Length	Pcs. / pallet
TLAP48B	48 mm	2400 mm	72
TLAP48E	48 mm	2400 mm	72



TLAP25 Blank



TLAP48 Blank

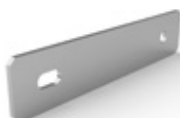
Aluminium profile system for patio slabs



TLQV

Terra Level lateral connector

The Terra Level lateral connectors are needed for corner joints and cross braces. The screw hole automatically guides the screw into the screw channel of the aluminium profile. The connector fits snugly in the aluminium profile and cannot slip.



TLLV

Terra Level longitudinal connector

The Terra Level longitudinal connectors are needed for extensions of the aluminium profile or for the shoring of leftover pieces of the profile. The screw hole automatically guides the screw into the screw channel of the aluminium profile. The connector fits snugly in the aluminium profile and cannot slip.



TLVV

Terra Level vertical connector

Terra Level vertical connectors are needed for treads or facing. The screw hole automatically guides the screw into the screw channel of the aluminium profile. The connector fits snugly in the aluminium profile and cannot slip.

Item no.	Pcs. / packing unit
TLQV	10 x 25 pcs.
TLLV	10 x 25 pcs.
TLVV	10 x 25 pcs.



TLQV Terra Level lateral connector



TLLV Terra Level longitudinal connector



TLVV Terra Level vertical connector

Aluminium profile system for patio slabs

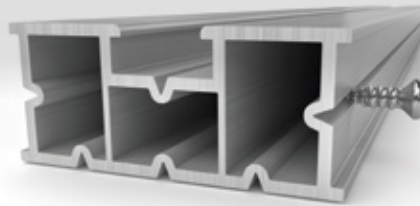


TLPS15

Terra Level profile screw 15 mm

The Terra Level profile screw has been precisely adapted to the aluminium profile screw channel and enables easy screwing without pre-drilling or drill screws. This means that no aluminium chips, which can damage the seal, are produced during screwing.

Item no.	Length	Pcs. / packing unit
TLPS15	15 mm	25 x 100 pcs.



TLPA3

Terra Level profile support 3 mm height, 3 mm joint

The Terra Level profile supports are made of impact sound absorbing plastic and are anchored in the profile without additional fastening ①. The patio slabs are decoupled from the profile by the 3 mm high support so that water can drain unhindered ②. Special openings in the support allow for an adhesive connection between the aluminium profile and patio slabs, which means that the Terra Level aluminium profile system dispenses with any visible clamps and braces ③!

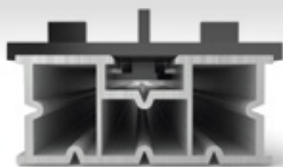


TLPAP1

Terra Level profile support plate 1 mm height

The Terra Level profile support plates are used to lay e.g. natural stone slabs with different slab thicknesses. Special centring holes prevent individual plates from falling out ④.

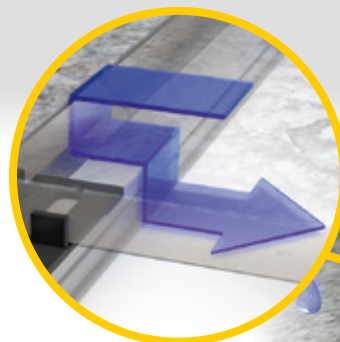
Item no.	Height	Pcs. / packing unit
TLPA3	3 mm	100
TLPAP1	1 mm	100



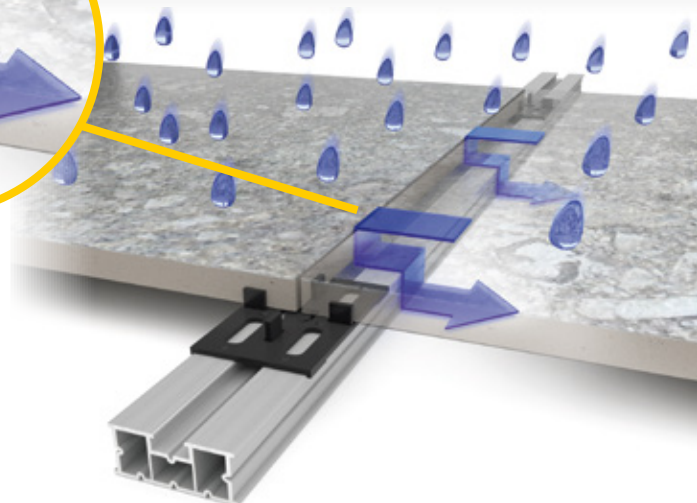
①



③



④



②

Aluminium profile system for patio slabs



TL2K

Terra Level MS adhesive black

Terra Level special adhesive is used to fix edge slabs and faceplates. The profile support has specially designed openings to ensure effective bonding between the aluminium profile and patio slabs. As a result, the Terra Level aluminium profile system does without any visible clamps and braces! The special adhesive retains its elastic properties to compensate for thermal expansion between the patio slabs and the aluminium profile.

TL2KMS

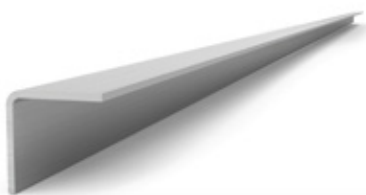
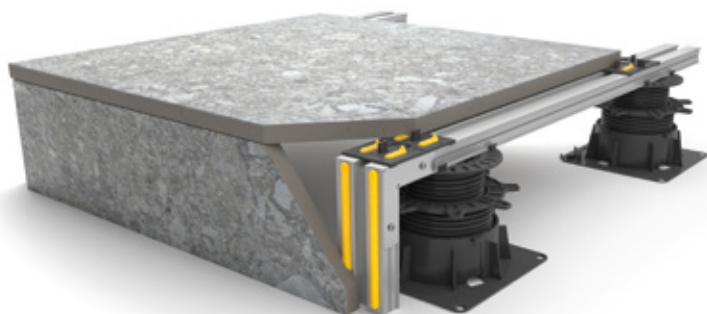
Terra Level 2K mixing tip



TL2KKP

Terra Level 2K Cartridge press

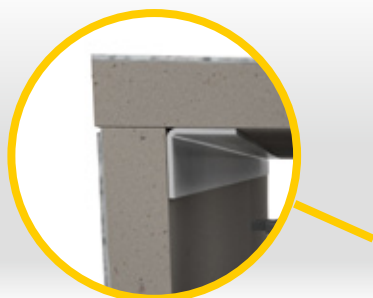
Item no.	Pcs. / packing unit
TL2K	10
TL2KMS	5
TL2KKP	1



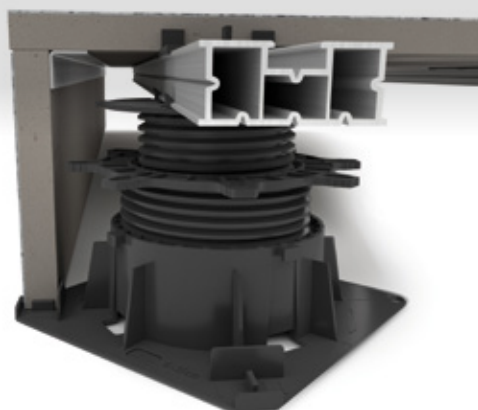
TLAW

Terra Level finishing bracket 15 x 15 mm leg, 2000 mm length

Faceplates can be easily installed using the Terra Level finishing bracket. The bracket is glued to the underside of the slabs. The slab is then inserted into the receptacle provided for this purpose on the base plate of the pedestal bearing and glued to the previously fixed finishing bracket. This means that the fascia slabs can be implemented entirely without visible clasps.



Item no.	Dimension	Thickness	Length	Pcs. / packing unit
TLAW	15 x 15 mm	1,5 mm	2000 mm	10



Aluminium profile system for patio slabs



TL1 Slab support 10 mm

Terra Level slab support 10 mm can be used for low structure heights. The total structure height of slab support + aluminium profile + profile support = 38 mm. The TL1 supports can be stacked in centimetre increments up to the desired structure height.

Item no.	Height	Pcs. / packing unit
TL1	10 mm	100



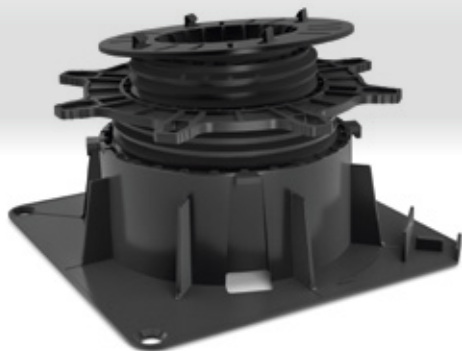
Aluminium profile system for patio slabs



TL17 Alu-Klip self-leveling elevated support 30 - 60 mm

The Alu-Klip self-leveling elevated supports are height adjusted using an adjustment ring. The Terra Level aluminium profile snaps into the holder and does not need to be additionally fastened. Each elevated support has a receptacle for fascia plates on the base plate.

Item no.	Height	Pcs. / packing unit
TL17	30 - 60 mm	48

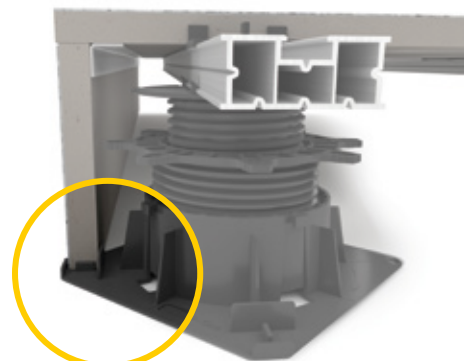


TL18 Alu-Klip self-leveling elevated support 60 - 150 mm

Item no.	Height	Pcs. / packing unit
TL18	60 - 150 mm	48



Alu-Klip holder



receptacle for fascia plates

Aluminium profile system for patio slabs



TL8K Coupler 90 mm

The Terra Level 90 mm coupler can be combined with TL14 and TL18. Unscrew the TL14/TL18 base plate and insert the coupler. This provides a structure height of 150 mm to 240 mm. Up to 8 couplers can be locked on top of one another, and thus heights from 150 mm to 870 mm can be realised.

Item no.	Height	Pcs. / packing unit
TL8K	90 mm	32



unscrew



lock



screw in

TL DRV

Drainage grate, galvanised including tray.

Item no.	Length	Width	Height
TL DRV 13	2000 mm	130 mm	21 mm
TL DRV 20	2000 mm	200 mm	21 mm
TL DRV 25	2000 mm	250 mm	21 mm

TL DRE

Drainage grate, stainless steel including tray.

Item no.	Length	Width	Height
TL DRE 13	2000 mm	130 mm	21 mm
TL DRE 20	2000 mm	200 mm	21 mm
TL DRE 25	2000 mm	250 mm	21 mm



Elevated support for wood and WPC substructures



TL11 L-receptacle elevated support rigid 30 - 60 mm

The Terra Level L-receptacle rigid elevated supports for wood and WPC substructures are height adjusted using an adjustment ring. The substructures are laterally screwed with the stop provided for this purpose.

Item no.	Height	Pcs./ packing unit
TL11	30 - 60 mm	48



TL12 L-receptacle elevated support rigid 60 - 150 mm

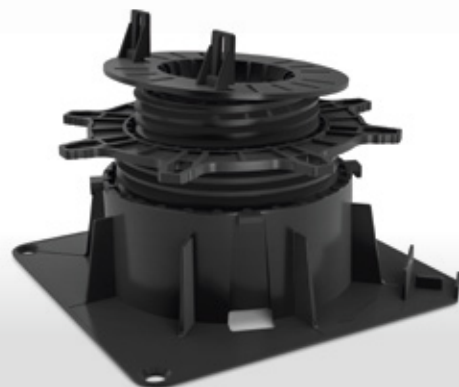
Item no.	Height	Pcs./ packing unit
TL12	60 - 150 mm	36



TL15 L-receptacle self-leveling support 30 - 60 mm

The Terra Level L-receptacle self-leveling elevated support for wood and WPC substructures are height adjusted using an adjustment ring. The substructures are laterally screwed with the stop provided for this purpose.

Item no.	Height	Pcs./ packing unit
TL15	30 - 60 mm	48



TL16 L-receptacle self-leveling support 60 - 150 mm

Item no.	Height	Pcs./ packing unit
TL16	60 - 150 mm	36

Elevated support for wood and WPC substructures

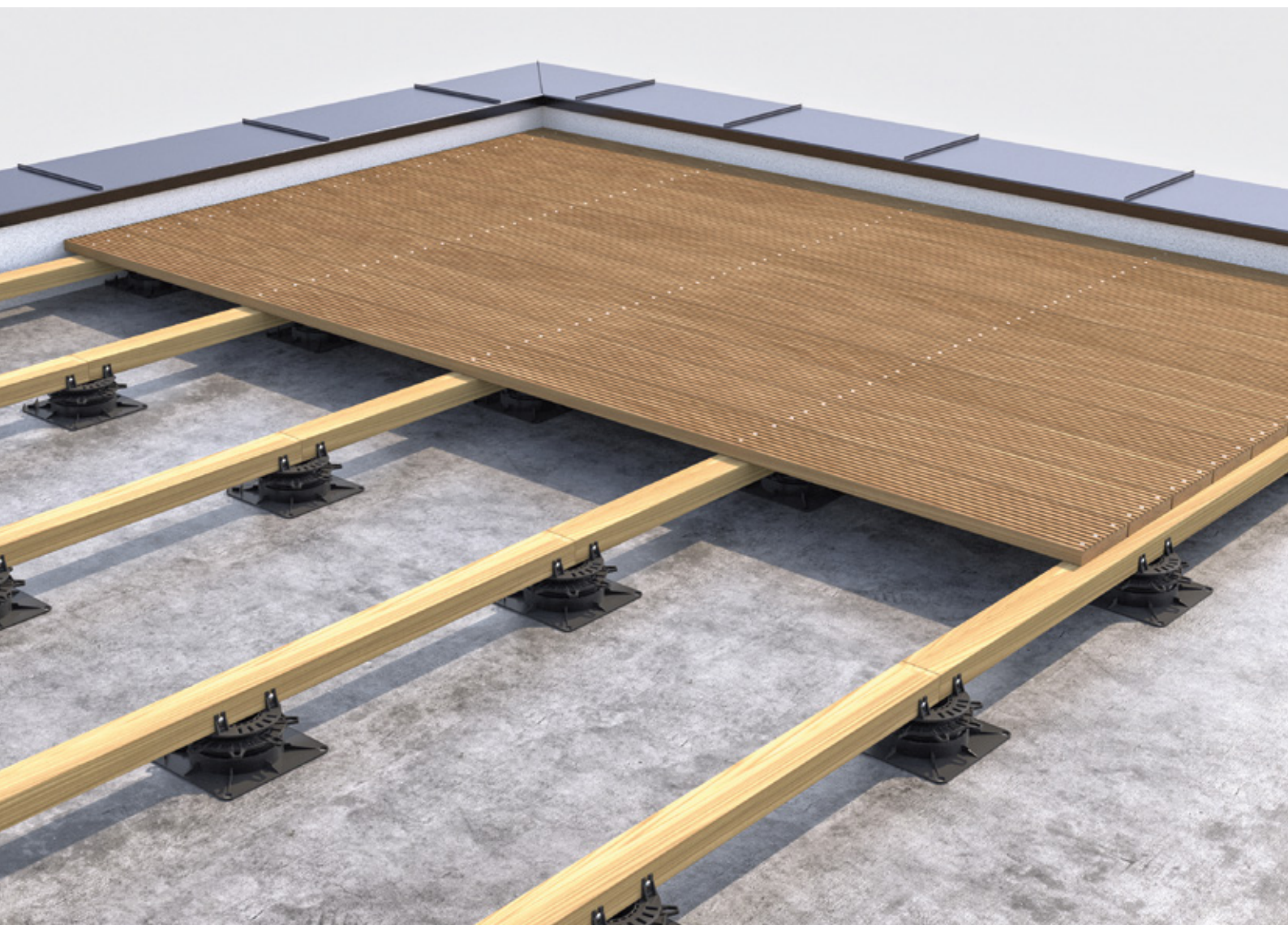


TL8-K Coupler 90 mm

The Terra Level 90 mm coupler can be combined with TL12 and TL16. Unscrew the TL12/TL16 base plate and insert the coupler. This provides a structure height of 150 mm to 240 mm. Up to 8 couplers can be locked on top of one another, and thus heights from 150 mm to 870 mm can be realised.

Item no.	Height	Pcs./ packing unit
TL8K	90 mm	32

 Note on use: see page 8, 13



Slab support for patio slabs



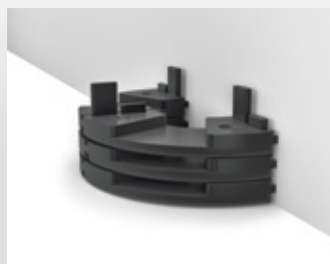
TL1 Slab support 10 mm stackable

The TL1 slab support 10 mm can be laid on any sealing foil. The very durable special plastic does not harden and reduces impact sound. TL1 are stackable and can be used for installation heights from 10 mm to over 200 mm.

Item no.	Height	Joint	Pcs./ packing unit
TL1	10 mm	3 mm	100



stackable



edge solution



T-joint



fine leveling

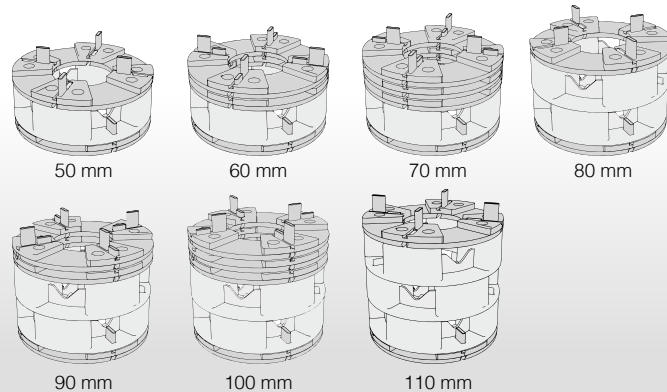


TL2 block 30 mm stackable, only in use with TL1

The TL2 block 30 mm was designed to shorten work processes and save costs. The block must be terminated at the top and bottom with TL1 and can therefore only be used from a structure height of 50 mm.

Item no.	Height	Joint	Pcs./ packing unit
TL2	30 mm	3 mm	52

Structure heights:



50 mm

60 mm

70 mm

80 mm

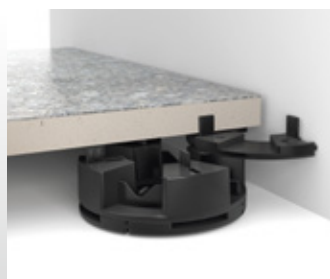
90 mm

100 mm

110 mm



stackable



edge solution

Slab support for patio slabs

TL3 1 mm shim stackable

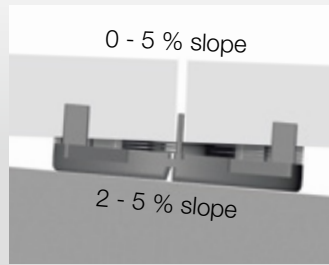


Easy leveling is possible using the TL3 1 mm shims. Deviating slab thicknesses, unevenness of the substrate and all slope situations can be compensated for up to 10 mm per slab corner.

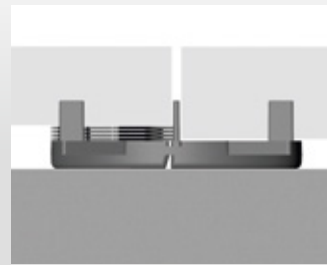
Item no.	Height	Pcs./ packing unit
TL3	1 mm	4 x 500



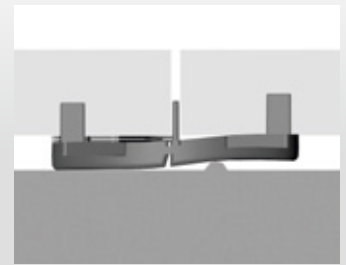
fine leveling



mitigate / compensate for slope



laying of different slab thicknesses



leveling of unevenness from the substrate

TLGP Terra Level rubber granulate pad Alu laminated, 200 mm x 200 mm, 6 mm height



The Terra Level rubber granulate pads can be used in combination with TL1 10 mm or TL2 30 mm. Thus, structure heights of 16 mm, 26 mm, 36 mm, etc. are realised and the number of TL3 1 mm shims is reduced.

Item no.	Height	Pcs./ packing unit
TLGP	6 mm	70

DVP bearing load distribution plate Joint 3 mm, diameter 200 mm



The bearing load distribution plate can be combined with TL1 and TL3. This provides a larger bearing surface of 200 mm diameter.

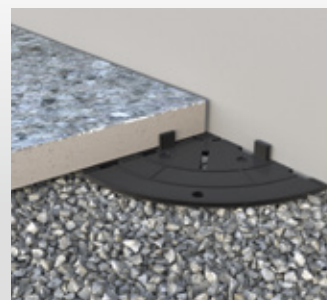
Item no.	Height	Joint	Pcs./ packing unit
DVP	4 mm	3 mm	100



Bearing load distribution for TL1 and TL2



Crushed stone support



Crushed stone support for edge



Crushed stone support suitable for TL3 1 mm shim

Elevated support for patio slabs



TL7 elevated support 30 - 60 mm Joint 3 mm

The TL7 elevated support is height adjusted using an adjustment ring. Where necessary, fine leveling and slope compensation is performed using the TL3 1 mm shims. Edge solution integrated!

Item no.	Height	Joint	Pcs./ packing unit
TL7	30 - 60 mm	3 mm	48

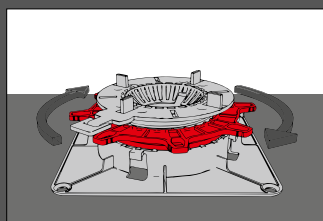


TL8 elevated support 60 - 150 mm Joint 3 mm

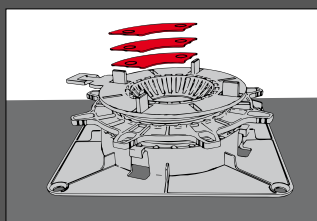
The TL8 elevated support is height adjusted using an adjustment ring. Where necessary, fine leveling and slope compensation is performed using the TL3 1 mm shims. Edge solution integrated!

Item no.	Height	Joint	Pcs./ packing unit
TL8	60 - 150 mm	3 mm	48

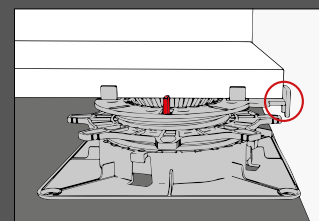
Use of TL7 and TL8 elevated supports



Adjustment ring



slope compensation and fine leveling



edge solution



TL8-K Coupler 90 mm

The Terra Level 90 mm couplers can be combined with TL8. Unscrew the TL8 base plate and insert the coupler. This provides a structure height of 150 mm to 240 mm. Up to 8 couplers can be locked on top of one another, and thus heights from 150 mm to 870 mm can be realised.

Item no.	Height	Pcs./ packing unit
TL8K	90 mm	32



unscrew



lock



screw in

Elevated support for patio slabs

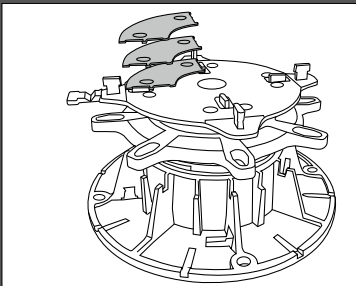


TL4 elevated support 60 - 130 mm Joint 3 mm

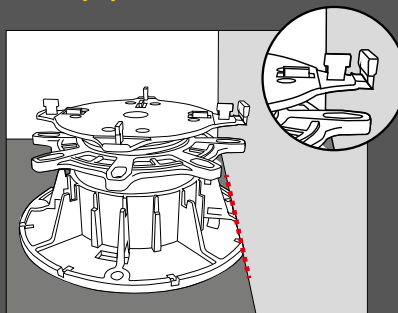
TL4 slab supports 60 mm to 130 mm are height adjusted using an adjustment ring. Where necessary, fine leveling and slope compensation is performed with the TL3 1 mm shims. For structure heights just above 130 mm, it is also possible to build up with TL1 10 mm slab supports. Edge solution integrated

Item no.	Height	Joint	Pcs./ packing unit
TL4	60 - 130 mm	3 mm	48

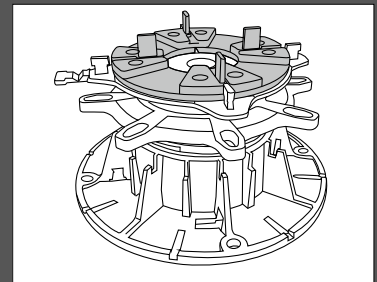
i Use of TL4 elevated supports



fine leveling



edge solution



Height assembly variant with TL1

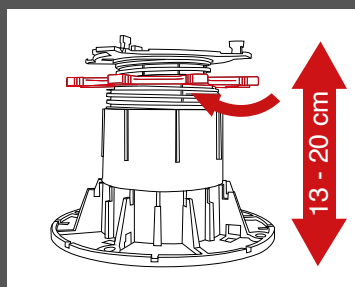
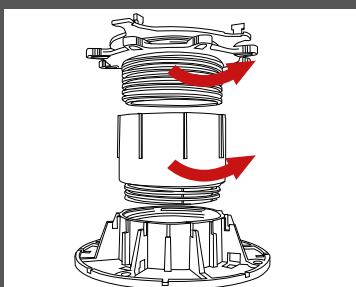


TL4-K Coupler 70 mm

The TL4K coupler 70 mm can only be used in conjunction with TL4 - Unscrew TL4 base plate and insert coupler. The height adjustment of 70 mm can be adjusted using the central adjustment ring. This allows for a structure height of 130 mm to 200 mm. Several couplers (max. 10) can also be used - max. installation height 830 mm.

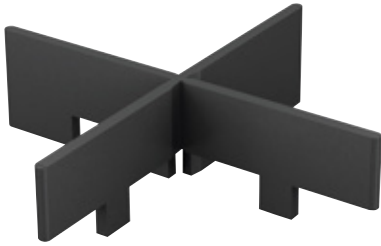
Item no.	Height	Pcs./ packing unit
TL4-K	70 mm	30

i Use of TL 4 -K coupler



max. 10 on top of one another

Joint crosses



FK3/FK5 joint cross 3 mm/5 mm

The 3 mm/5 mm joint crosses enable an exact joint pattern. In addition to cross joint installation, the predetermined breaking point on the leg also enables installation with a T-joint.

Item no.	Height	Joint	Pcs./ packing unit
FK3	15 mm	3 mm	60 x 50 pcs.
FK5	15 mm	5 mm	60 x 50 pcs.



SFK special joint cross 3 mm

The special joint cross enables an exact joint pattern. The wings prevent the cross from lifting. In addition to cross joint installation, the predetermined breaking point on the leg also enables installation with a T-joint.

Item no.	Height	Joint	Pcs./ packing unit
SFK	10 mm	3 mm	10 x 200 pcs.



FKT3/FKT5 joint cross with plate 3 mm/5 mm transparent

The transparent 3 mm/5 mm joint crosses with plate enable an exact joint pattern. The plate prevents the cross from lifting. In addition to cross joint installation, the predetermined breaking point on the leg also enables installation with a T-joint.

Item no.	Height	Joint	Pcs./ packing unit
FKT3	10 mm	3 mm	60 x 50 pcs.
FKT5	10 mm	5 mm	60 x 50 pcs.



DVP crushed stone support joint 3 mm

Due to the large diameter of 200 mm, the DVP crushed stone supports are ideally suited for gravel bed installation. This prevents individual slab corners from settling as quickly. Where necessary, TL3 1 mm shims can be used to retrospectively level the surface.

Item no.	Height	Joint	Pcs./ packing unit
DVP	4 mm	3 mm	100

TERRA[®]
LEVEL

Always on the level...

Leitner Handels GmbH

Raimundstraße 45 | 4020 Linz | Austria

T +43 (0)732 70 10 91

F +43 (0)732 700 447 23

office@terra-level.com

www.terra-level.com